

Trine Dual Enrollment: Fall Semester Newsletter

Instructors, Liaisons, & School Partners

We hope that everything is going well so far this Fall semester. There have been a few changes within Trine DE since last year, so to help, this semester newsletter should be a good resource for you to use. We will put one of these newsletters out each semester to keep you up to date with important information, changes to policies, upcoming events and so on. So whether this is your first time teaching DE, or your 12th, hopefully there will be something here that is valuable to you. Don't forget to give us some feedback on our survey below, tell us how we can make your Trine Dual Enrollment experience better!

One last note, we want you to know that we are dedicated to making Dual Enrollment as easy and as seamless as possible for you and your students. Or in some cases when easy and seamless aren't an option, we can be there to help provide solutions to whatever issues come up. We want you to know that we value our partnerships with you and are here to help with whatever you need to be successful.

—Jonathan Baker



School Administrators and Counselors

Spring and Fall Registrations

- Registration for Spring starts in late October and early November, if you would like to schedule in-person registration please let us know so that we can put it on our calendar

Guided Experience Courses

- If your school is worried about maintaining your current DE courses because you no longer have your approved instructor, or if you are looking to expand your DE offerings without the need for a certified instructor, our new [Guided Experience Program](#) may be a great option for your school
- Students are enrolled and taught in one of our Trine Online Courses, but they also supported in the classroom by your teacher. If you are interested, please reach out to us soon so we can discuss options and start planning

Links and Contact Emails

- Liaison and Instructor Resource Page: [Link](#)
- Jonathan Baker: [Email](#) & Graham Reeves: [Email](#)
- [Feedback Survey](#) (Instructors, Liaisons, & other School Partners)



Updates and Changes For Liaisons & Instructors: Fall 2022

Student Work / Evidence & Course Syllabus Submissions

- Done through the Shared Google Drive. Access to folders were shared with each liaison and instructor this summer using our trine.dual.enrollment@gmail.com account. If you can't find the email or cannot access the folder for some reason, please reach out to us at any time and we can resend the link to you



Classroom Site Visits

- Courses are now on a 3-year rotation, these were sent to both liaisons and instructors. If you can't find your spot in the rotation, please let me know and I can resend it to you
- Site visits can be done through various means such as in-person, asynchronous, or streaming; however its done, the site visit must be completed sometime during the semester(s) they are taught



Ongoing Collegial Interaction / Professional Development

- Liaisons are expected to provide some form of discipline specific PD to each instructor (1 on 1 or as a larger group). These interactions can take a wide variety of different forms, in-person, email, Zoom, etc. and can cover a wide range of topics. Liaisons are expected to complete the PGP Form, which is sent directly to the teacher after the PD

[Liaison and Instructor Resource Page](#)



Trine Dual Enrollment: Fall Semester Newsletter



Visit and Tour Trine's Campus

If you are ever interested in having your class, or a couple of classes, come and take a tour of Trine please let us know! Our Admissions staff and I really enjoy taking kids on tours and showing off what Trine has to offer them. Students can tour the campus, visit the library, get their college ID cards, and pick up some lunch in our renowned cafeteria! If you are interested, please reach out to us so we can get it arranged.

Campus Visit: [Page](#) and [Contact Email](#)

Instructor Spotlight: Mathew Tibbs

◆ Tell us a bit about your role.

I teach English 143, English 153, and Speech 203 at Westview High School. I have taught English 143 (formerly English 103 and 113) since the fall of 2011, English 153 since the fall of 2012, and Speech 203 since the spring of 2019.

◆ What's one thing you enjoy about working with Dual Enrollment?

I enjoy the collaboration and feedback from my liaison. I worked with Kande Heisler for many years, and she was awesome. I will miss her this year, but I look forward to working with Dr. Michael Oliver as our new English liaison. From the student side of instruction, I enjoy working with students who want to push themselves to take college courses in high school and gain credit before entering college. I think that has helped many students get better prepared for the rigor of college by taking a dual enrollment course before they enter their college career.

◆ What are you most likely to be doing when you're not working; or what is something most people don't know about you?

I am most likely to be reading for fun. I work part-time at the Kendallville Public Library, and I host a monthly book club there called Matt's Book Club. I'm pretty busy reading contemporary novels to choose from for our library's book club picks. I also play drums for our worship band at St. John's Lutheran Church in Kendallville one Sunday a month. I also enjoy spending time with my wife, Carrie, and daughter, Olivia.

Upcoming Dates:

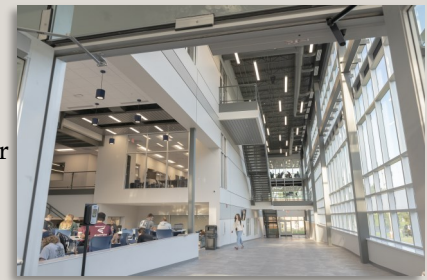
Liaisons and Instructors (Academic Experience)

- Syllabus Submissions are should be completed by Oct. 1st
- Fall Semester Course Observations should be complete by December 5th
- Student Evidence should be collected and submitted before the end of the local school's semester



Facilitating Teachers, Counselors, Administrators

- October 15th Fall Term 1 Ends (Trine Online/Guided)
- October 24th Fall Term 2 Begins (Trine Online/Guided), make sure you check out the Trine Bookstore to make sure students have books and materials they need before the course starts!
- Late October Registration for Spring starts, if you are interested in having one of us come to your school to help register new students please let us know
- December 9th Trine Online (Fall) Term 2 Ends
- January 9th Spring Term
- New course development and creation requests for Fall 2023 are due in March. If your school is interested in offering a new



Liaison Spotlight: Lauren Taylor

◇ Tell us a bit about your role.

I have been the faculty liaison for mathematics courses since 2015. This is my ninth year as a faculty member at Trine University and I have taught an array of courses including College Algebra, Precalculus, Trigonometry, Statistics, Essential Calculus, Calculus I, and Calculus II. I mainly oversee College Algebra, Precalculus, and Calculus I dual enrollment courses.

◇ What's one thing you enjoy about working with Dual Enrollment?

Both my Bachelor and Master of Science is in Secondary Mathematics Education. I really enjoy working with Dual Enrollment instructors because I get to utilize by educational expertise and also witness the incorporation of wonderful teaching techniques of mathematics in the high school classrooms.

◇ What are you most likely to be doing when you're not working; or what is something most people don't know about you?

Most people don't know that prior to working at Trine University, I was first a Mathematics Teacher for a Juvenile Correctional Facility and then a GED instructor at a Women's Correctional Facility for multiple years.